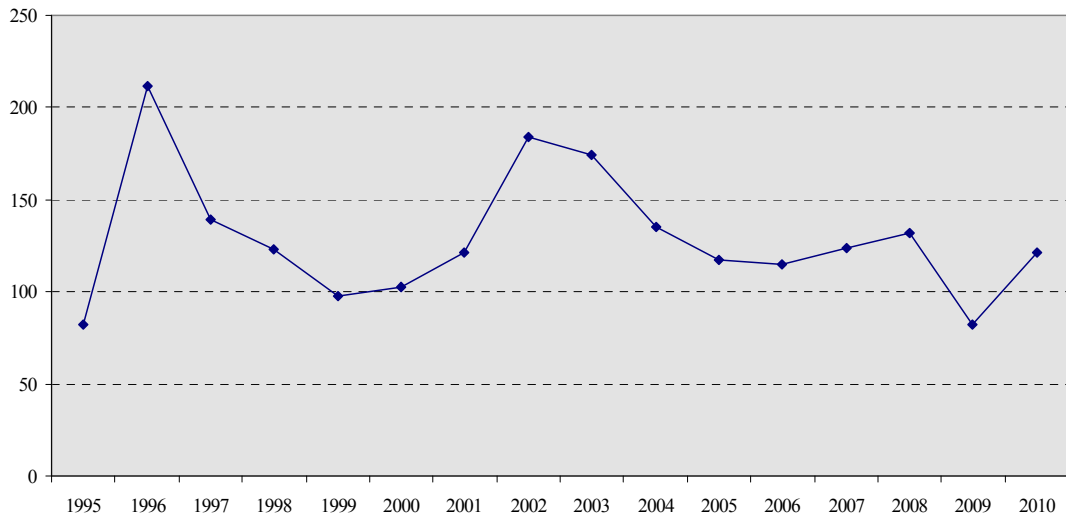
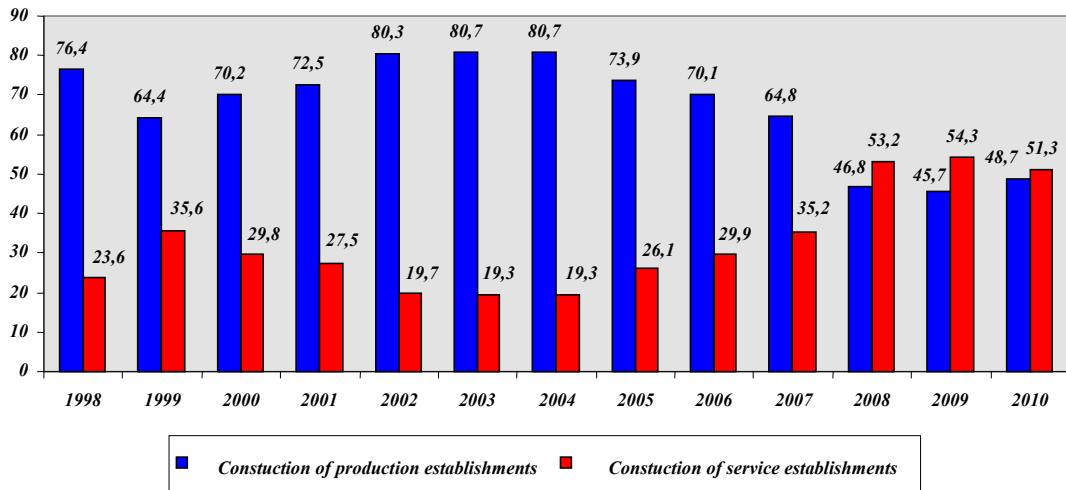


**70. Indexes of main socio-economic indicators in construction  
(compared to the last year, in percent)**

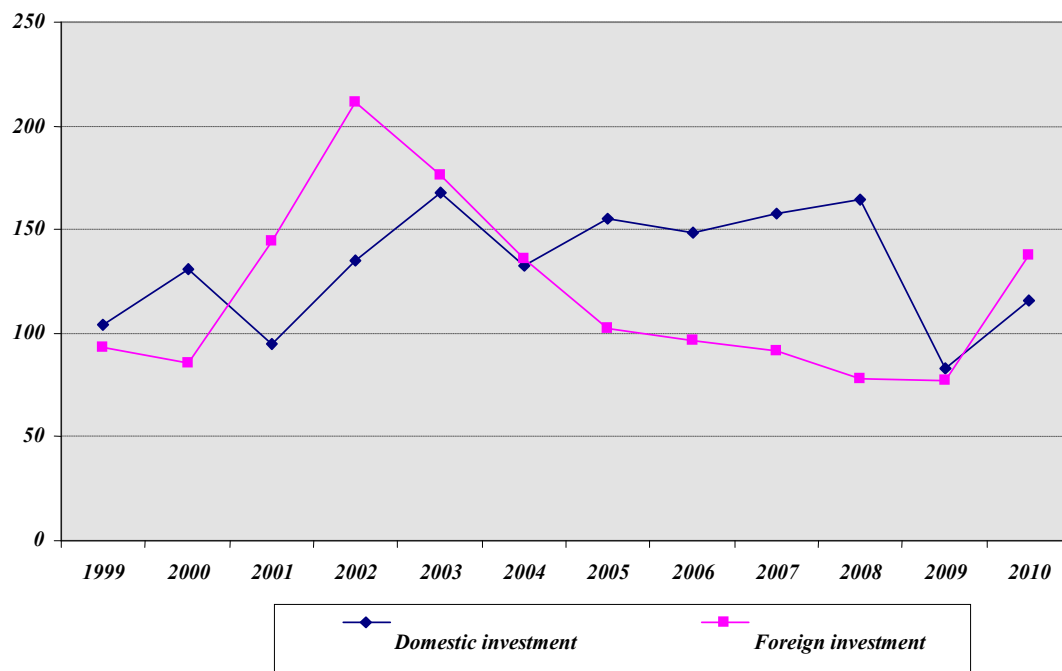
**Capital investments**



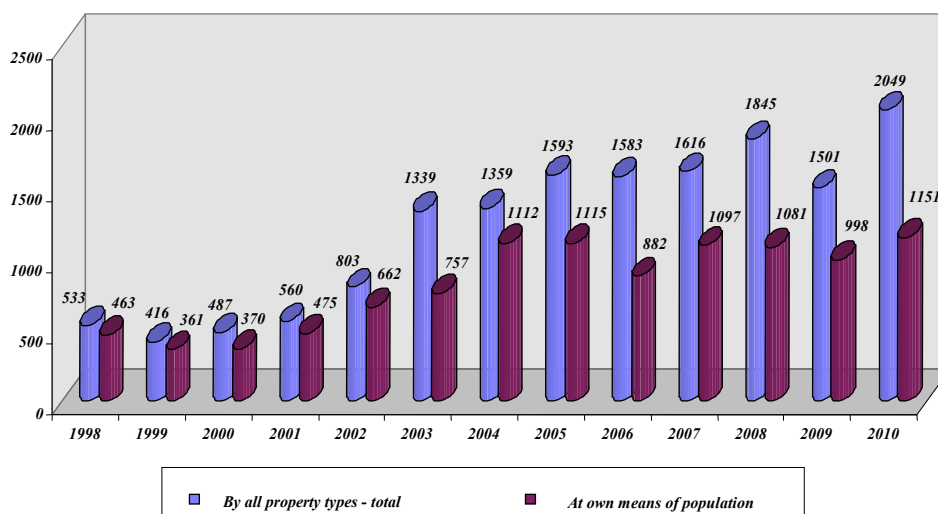
**71. Share of investments directed to construction of production and  
service establishments (percent)**



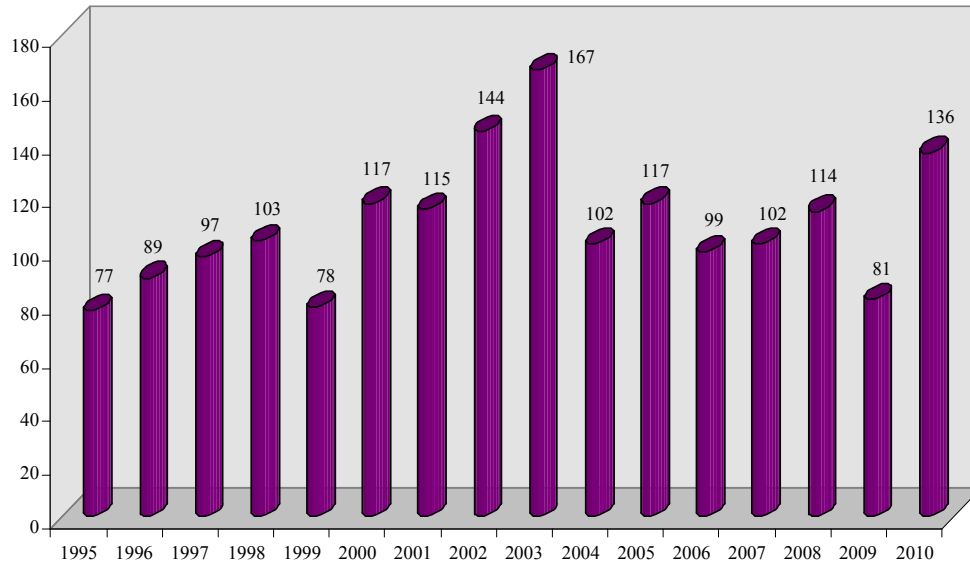
**72. Domestic and foreign investment directed to fixed capital  
(compared to the last year, in percent)**



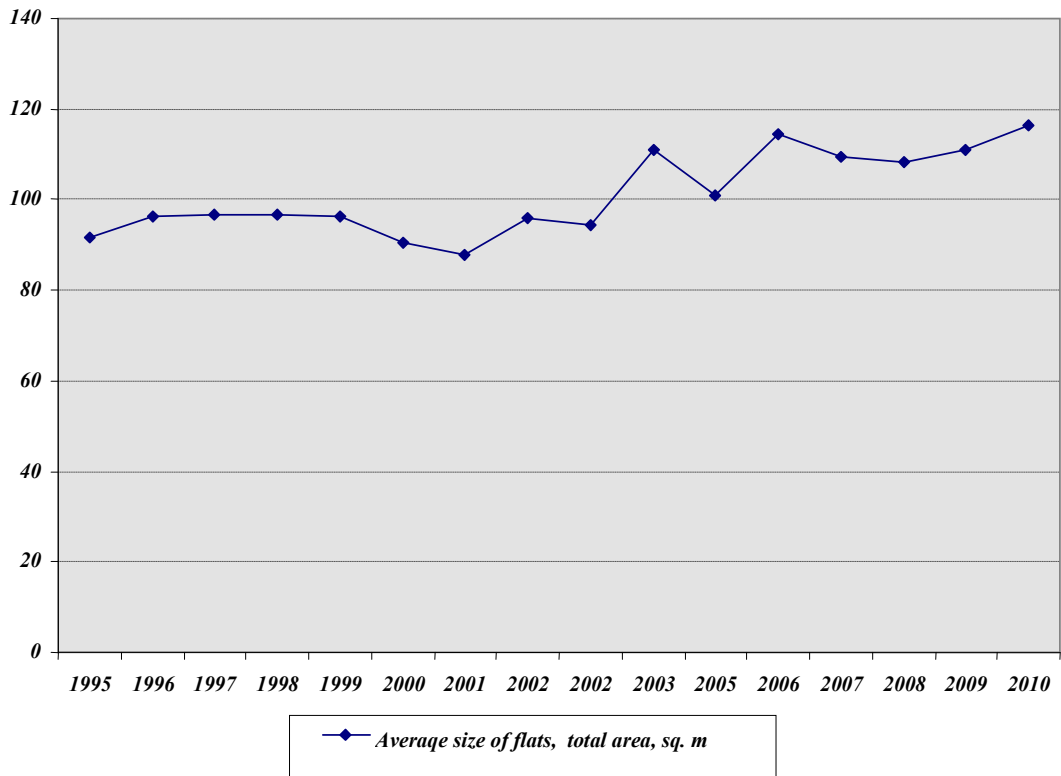
**73. Submitted into use of dwellings  
(total area, thsd. sq.m)**



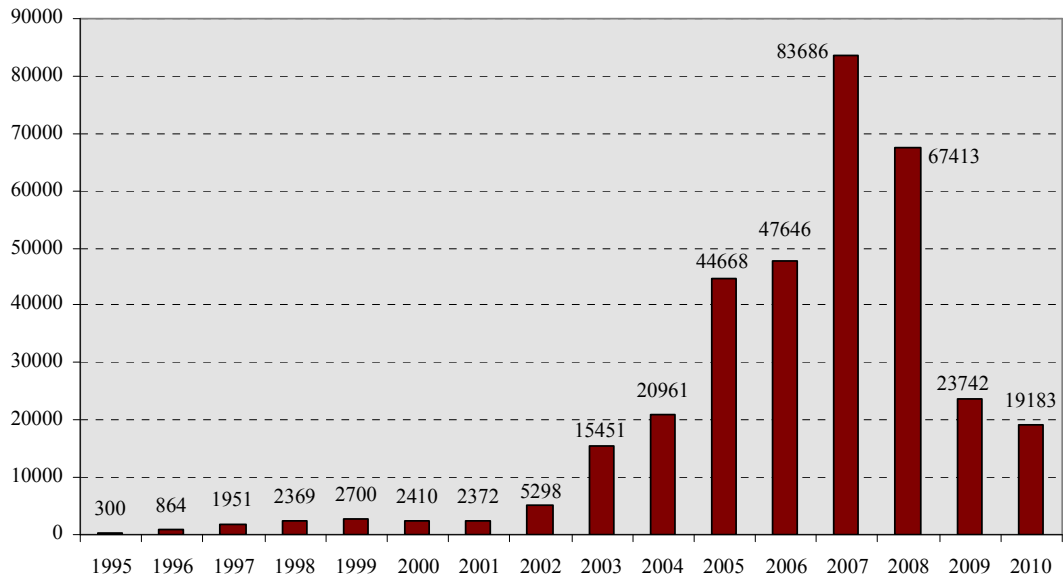
**74. Dwellings submitted into use  
(compared to the last year, in percent)**



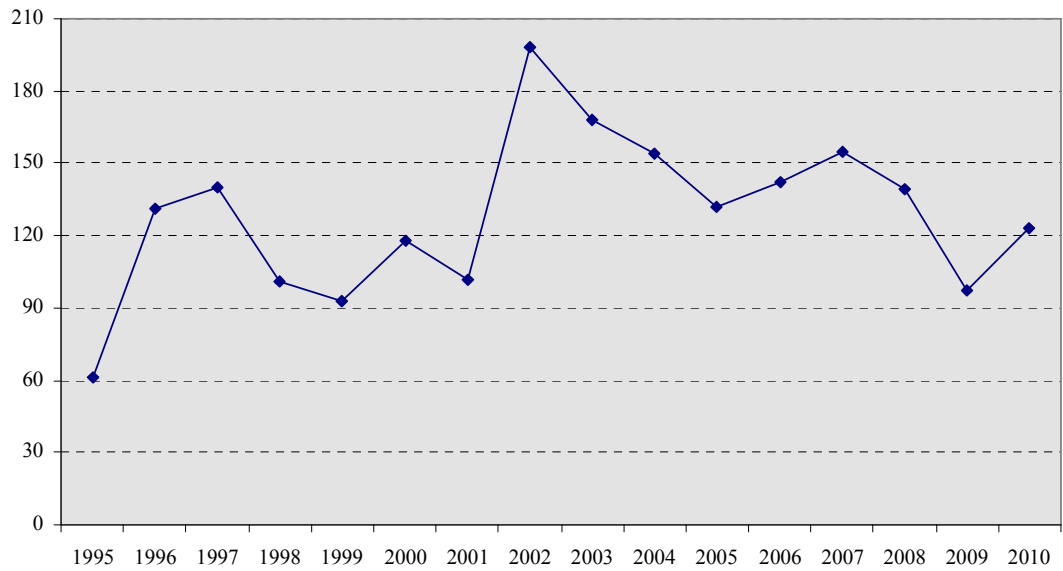
**75. Average size of flats submitted into use**



**76. General education schools submitted into use  
(pupil seats)**



**77. Volume of contract work  
(compared to the last year, in percent)**



### 78. Privatization of the dwellings stocks

